



Community Engagement Summary Report

Kurrimine Beach Boatramp Carpark Upgrade

Prepared April 2026



Engagement Snapshot



1,335

YOUR SAY VIEWS



164

YOUR SAY
CONTRIBUTIONS



1

STAKEHOLDER
MEETING



39,595

SOCIAL MEDIA CAMPAIGN
REACH



Background

Kurrimine Beach is a highly valued coastal destination, supporting a mix of recreational, tourism and community activities. With the delivery of a new two-lane boat ramp by Maritime Safety Queensland, Council is required to provide supporting carparking infrastructure to accommodate increased use and ensure safe and efficient operation of the facility.

To meet this requirement, Cassowary Coast Regional Council is progressing the Kurrimine Beach Boat Ramp Carpark Upgrade.

The project aims to deliver a functional and safe parking solution while recognising the importance of surrounding community spaces, environmental values, and the character of the area.

This report summarises the engagement process, key findings and community insights.



Engagement Purpose

The purpose of the engagement was to gather local knowledge and community input to inform how the carpark can best be delivered.

Residents, visitors and stakeholders were encouraged to share their views on the proposed carpark location and design, as well as broader considerations including land use, environmental impacts, safety, accessibility and functionality of the foreshore.

The feedback collected through this process will support Council in refining a detailed car park design and ensuring future decisions reflect both project requirements and community priorities.

It will also assist in identifying a balanced approach that supports increased demand while protecting the values that make Kurrimine Beach an important community destination

How we engaged

Council undertook a public consultation campaign between 5 March and 26 March 2026 to raise awareness and seek community input on the Kurrimine Beach Boat Ramp Carpark Upgrade. The consultation included:

- Release of a dedicated Your Say engagement page on 5 March 2026.
- Provision of an online survey via the Your Say page from 5 March to 26 March 2026.
- Social media posts on 6 March (paid), 12 March and 19 March 2026.
- Radio advertising campaign running from 10 March to 23 March 2026.
- Newspaper advertisement published on 11 March 2026.
- Media release issued on 6 March 2026 -Help shape future car-trailer parking at Kurrimine Beach Boatramp
- Editorial coverage in local media on two occasions.
- Installation of corflume signage at Kurrimine Beach.
- Direct stakeholder engagement, including with the Kurrimine Safe Boating Committee.



Figure 1: Social media post - 6 March and ¼ page ad in The Observer 11 March 2026

Public consultation outcomes

The public consultation attracted strong participation from the local community, ensuring feedback reflects those most familiar with the Kurrimine Beach foreshore.

In total, 147 contributors provided 164 contributions during the consultation period. The majority of respondents were Kurrimine Beach residents (66.46%), with additional input from Cassowary Coast residents, visitors and recreational users, reflecting a mix of local and broader community perspectives.

A large proportion of respondents identified as regular boat ramp users, with 31.71% using the ramp weekly or more and 25.00% using it monthly. A further 24.39% indicated they do not regularly use the ramp but have an interest in the project, highlighting broader community interest in the future of the foreshore.

This distribution of responses demonstrates strong participation from both frequent users with practical, on-the-ground experience and community members invested in how the area is used and managed.

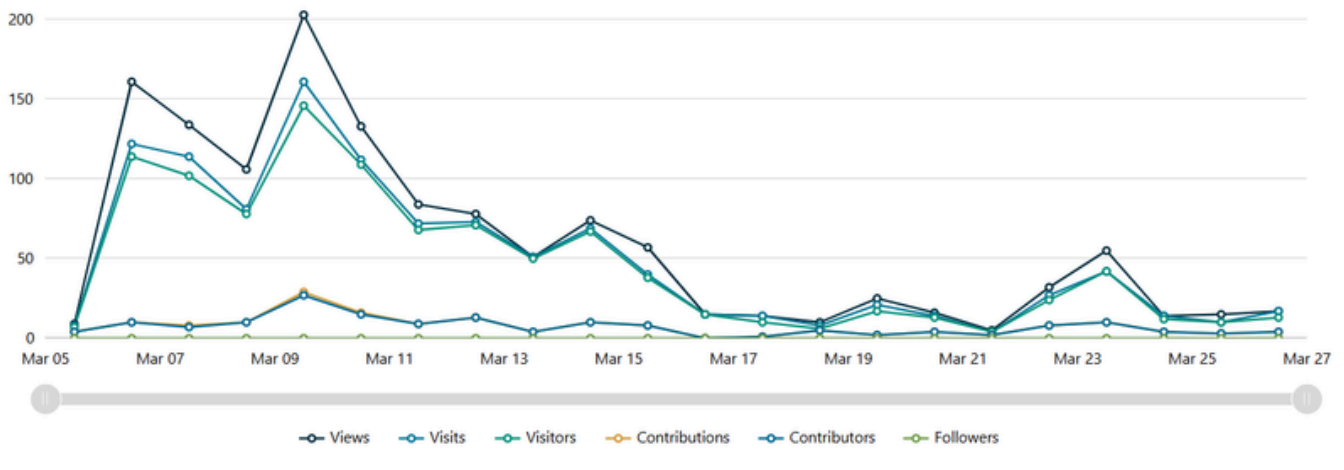


Figure 2: YourSay contributions

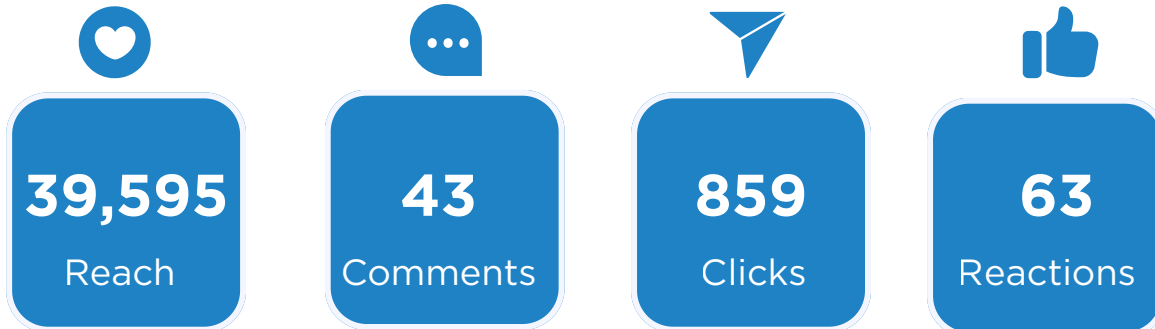


Social media campaign

Council delivered three social media posts to support the consultation and reach a broader audience, with the launch post strategically boosted over a 10-day period.

The campaign achieved a combined reach of 39,595, demonstrating strong community interest across Kurrimine Beach and the Cassowary Coast.

Social media performance



High reach and strong interaction levels indicate the campaign successfully captured community attention and encouraged engagement.

Yes use some of tafflos park for the boat and car park take down the first row of trees definately NOT the caravan park there is over twenty five couples that come to kurrimine beach caravan park every year and stay for 3 months and then come back for the fishing ask the fishing club how many members are from all over the country some people have been comming up to 28 years to that park what a stupid idea to take that caravan park away

The caravan park is more important to Kurrimine Beach than a massive car park with fewer tourists. The tourists that stay in the caravan park get involved with the local community. They play golf, go to CWA & Red Cross activities, attend markets and functions. They Purchase groceries, fuel and eat out. Please ask the locals and tourists.

This is a rubbish design that does not follow main roads specs for a 2 lane boat ramp carpark council needs to go to the safe boat ramp committee to present to community members not the opinion of council officers that does not have the community interests

Cassowary Coast Regional Council
6 March at 10:32

Help shape the future of car-trailer parking at Kurrimine Beach boat ramp

We're inviting the community to have their say on future car-trailer parking and surrounding land use at the Kurrimine Beach Boat Ramp, ahead of the State Government delivering the new two-lane ramp. Planning is underway to review long-term parking capacity, including opportunities to increase and formalise trailer parking while maintaining space for the Kurrimine Beach Fishing Competition. Your feedback will help inform the final design and future land use, to ensure the area supports boating, events and community use into the future.

Have your say: <http://yoursay.cassowarycoast.qld.gov.au/kurrimine-beach...>

Submissions close 4pm, Thursday 26 March 2026

Have Your Say!
Carpark Upgrade Kurrimine Beach boat ramp

Tell us your preference for future land use of the caravan park

Share your feedback on the draft concept design

yoursay.cassowarycoast.qld.gov.au
Consultation closes 26 March

YOURSAY.CASSOWARYCOAST.QLD.GOV.AU
Kurrimine Beach Boat Ramp Carpark Upgrade

Learn more

What we heard

The engagement provided valuable insight into how the community uses, values, and connects with the Kurrimine Beach foreshore. Feedback reflected a strong level of interest in the project, with many participants taking the opportunity to share both practical suggestions and broader community perspectives.

Future use of the caravan park

Community views on the future of the caravan park were mixed, with no single preferred outcome emerging.

- 41.46% of respondents supported retaining the caravan park, recognising its importance for tourism, local economy and community use
- 34.76% supported converting the site to a primary car and trailer park, with a further 17.07% supporting overflow or event use

Feedback highlighted the value many place on the caravan park as part of Kurrimine Beach's identity, while others expressed support for improving infrastructure to better meet current and future demand.

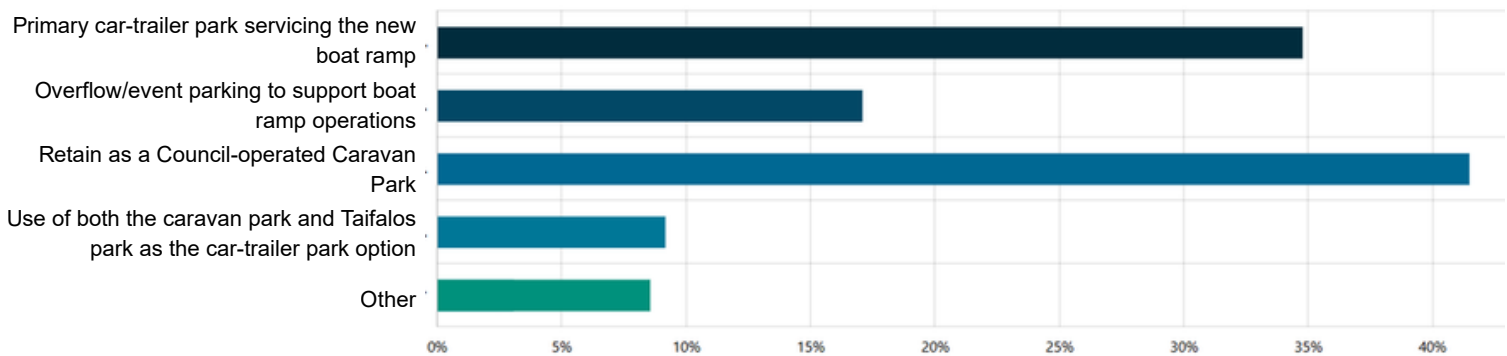


Figure 3: Results for caravan park future use options

Preferred location of carpark

Participants shared a range of perspectives on the most suitable location for the carpark.

Many respondents supported utilising the caravan park site, particularly where it would reduce impacts on existing community spaces. At the same time, there was recognition around retaining Taifalos Park as an important recreational area for both residents and visitors.

Some participants also suggested a combination of locations to help balance demand, particularly during peak periods.



Figure 4: Project area overview

What we heard

Key Priorities and Considerations

Across all responses, there was clear alignment on the factors most important to the community.

These included:

- Safety for users and pedestrians
- Managing traffic flow and congestion
- Protecting the natural environment
- Maintaining community amenity and character
- Ensuring proximity and accessibility to the boat ramp

This feedback highlights a shared expectation that any future design should be practical, safe and respectful of the surrounding environment.

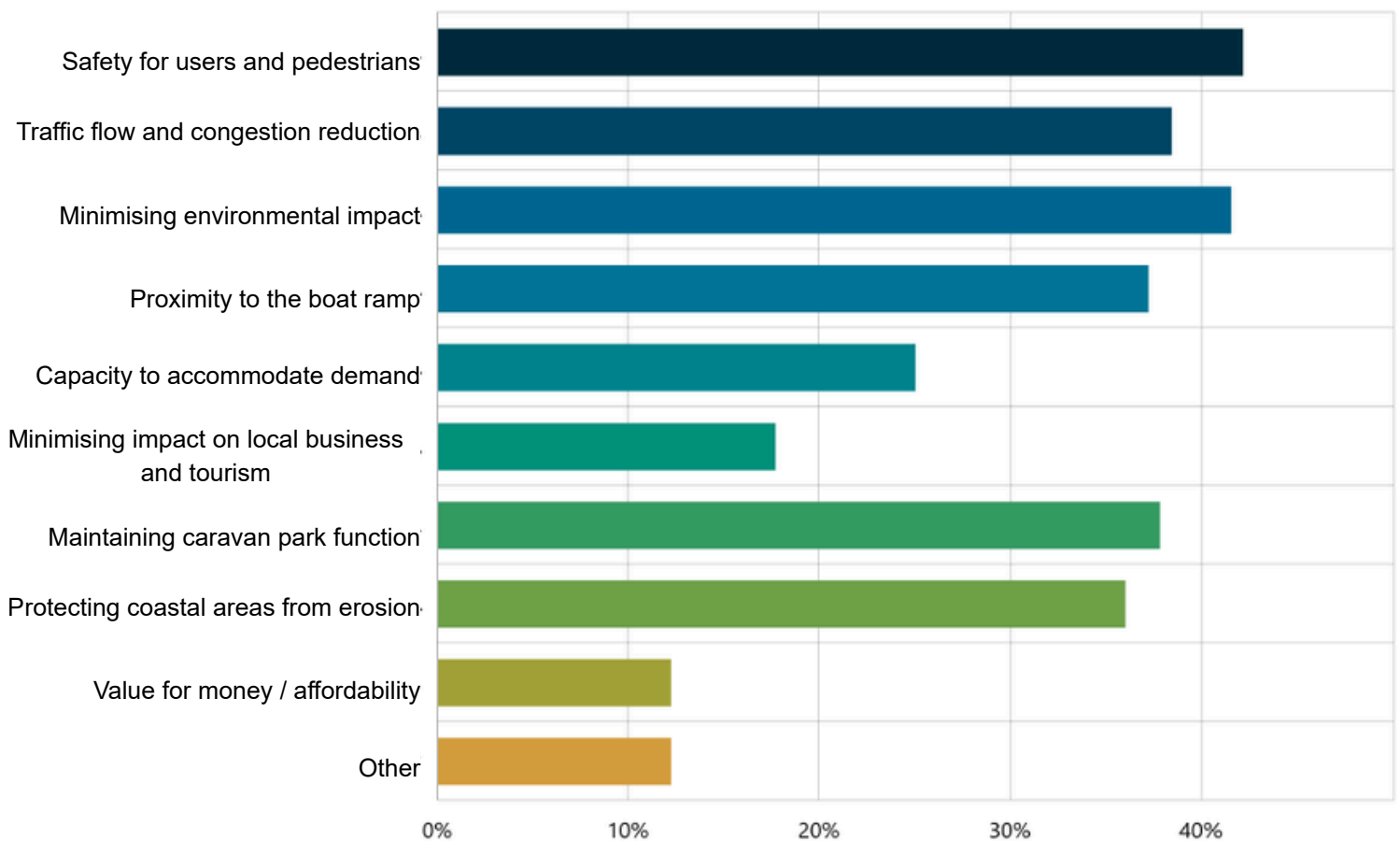


Figure 5: Key factors influencing community preferences for carpark location and design

What we heard

Support for the Concept Design

Feedback on the proposed design was varied.

- 68.90% of respondents did not support the current concept, while 31.10% indicated support
- Those who did not support the design often raised concerns about impacts on Taifalos Park, environmental considerations, and whether the design would meet long-term needs. Others acknowledged the importance of progressing improvements to support the upgraded boat ramp.

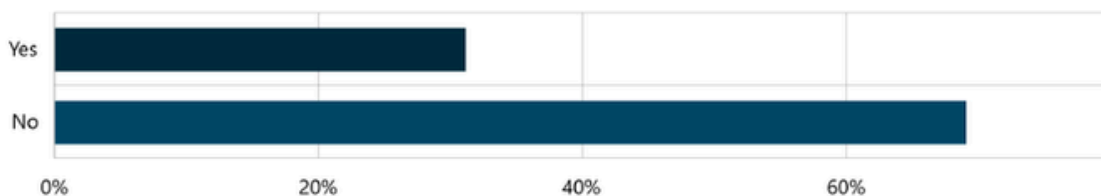
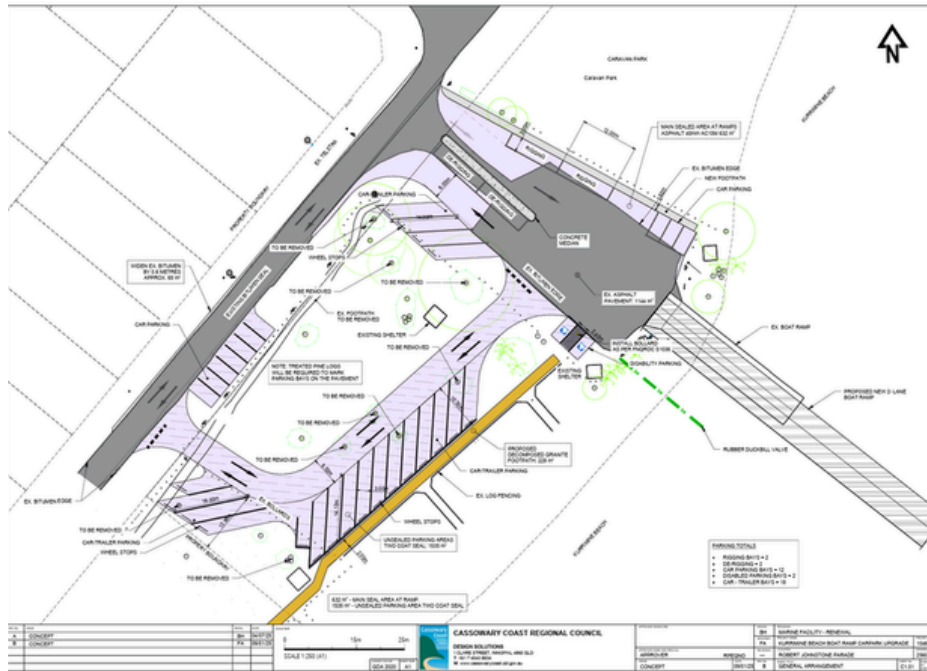


Figure 6: Community support for the proposed concept design

Additional Feedback and Suggestions

Participants provided a range of thoughtful suggestions to help inform the project moving forward.

Common themes included:

- Improving traffic flow, access and overall layout
- Including dedicated rigging, staging and wash-down areas
- Retaining Taifalos Park as a valued community space
- Exploring alternative or additional land to support parking
- Ensuring the design accommodates community events such as fishing competitions

Overall, the feedback reflects a community that is highly engaged and deeply connected to the area, with a shared interest in achieving a balanced outcome that supports both infrastructure needs and the values that make Kurrimine Beach unique.

Stakeholder feedback

Council met with the Kurrimine Safe Boating Committee as a key stakeholder group with direct experience in the use and operation of the boat ramp.

The meeting provided an opportunity to discuss the concept design, project requirements and potential alternative layout options. Feedback from the Committee focused on operational and user-specific considerations, including:

- Safety and functionality of the boat ramp and carpark
- Flow and circulation, including support for a one-way layout
- The need for adequate staging, rigging and queuing areas
- Proximity of parking to the boat ramp
- Consideration of alternative layout options and use of nearby land

This stakeholder feedback provides practical, experience-based insights and has been considered alongside the broader community input to inform the ongoing development of the project.



Figure 7: CCRC Project Delivery team met with Kurrimine Safe Boating Committee

Common themes

The engagement identified several consistent themes across the feedback received. These themes reflect both shared priorities and areas where community views differ, highlighting the need for a balanced and considered approach.

Recognition of Taifalos Park as valued community space

A clear and consistent theme throughout the engagement was the importance of Taifalos Park as a valued community space. Participants highlighted its role for recreation, events, and as a shaded, family-friendly area. There was strong sentiment that the park, where possible, be retained as open space for community use.

Range of views on the future of the Caravan Park

Feedback on the future of the caravan park was divided, with no single preferred outcome.

Some participants emphasised the importance of retaining the caravan park for tourism, local economy and community identity, while others supported repurposing the site to improve parking and support increased demand from the upgraded boat ramp.

Expectation for a functional and safe design

Across all responses, there was strong alignment that any future design must be practical, safe and fit for purpose.

Participants highlighted the importance of:

- Efficient traffic flow and circulation
- Adequate turning space for vehicles with trailers
- Separation of different user groups
- Clear and safe access to the boat ramp

Environmental Considerations Are Important

Environmental factors were a key consideration for many respondents, particularly in relation to tree retention, shade, and coastal processes.

Participants expressed a strong desire to minimise environmental impacts and maintain the natural character of the foreshore.

Balancing Community Use and Infrastructure Needs

A recurring theme was the shared expectation to balance infrastructure needs with environmental and community values.

Participants recognised the need to support increased use of the boat ramp, while also emphasising the importance of maintaining spaces for recreation, events, and everyday community use.

What happens next

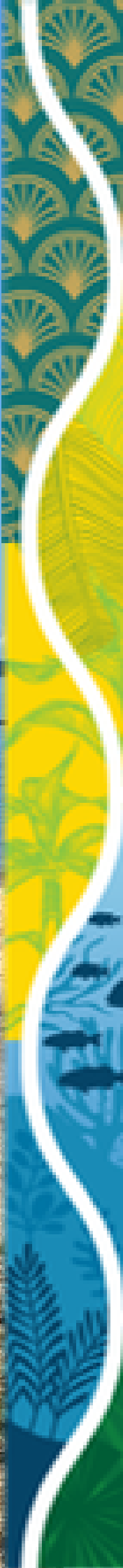
The feedback received through the engagement process will inform the next stage of the Kurrimine Beach Boat Ramp Carpark Upgrade.

Council will consider community input alongside technical requirements, funding constraints, and relevant planning and environmental considerations to guide the development of the project.

The feedback highlights the importance of achieving a balanced outcome that supports improved infrastructure while protecting community spaces, environmental values, and local character.

Next Steps

- Finalise and review engagement outcomes
- Present recommendations to Council for consideration
- Use feedback to develop detail design for carpark
- Undertake technical assessments and costings
- Provide updates to the community as the project progresses



-  1300 763 903
-  enquiries@cassowarycoast.qld.gov.au
-  cassowarycoast.qld.gov.au
-  70 Rankin Street, Innisfail
38-40 Bryant Street, Tully
4 Balliol Street, Cardwell